



Sutura
STYLE
LEARN TO SEW SERIES

L1002

One Size

SWEETHEART SCISSOR COVERS

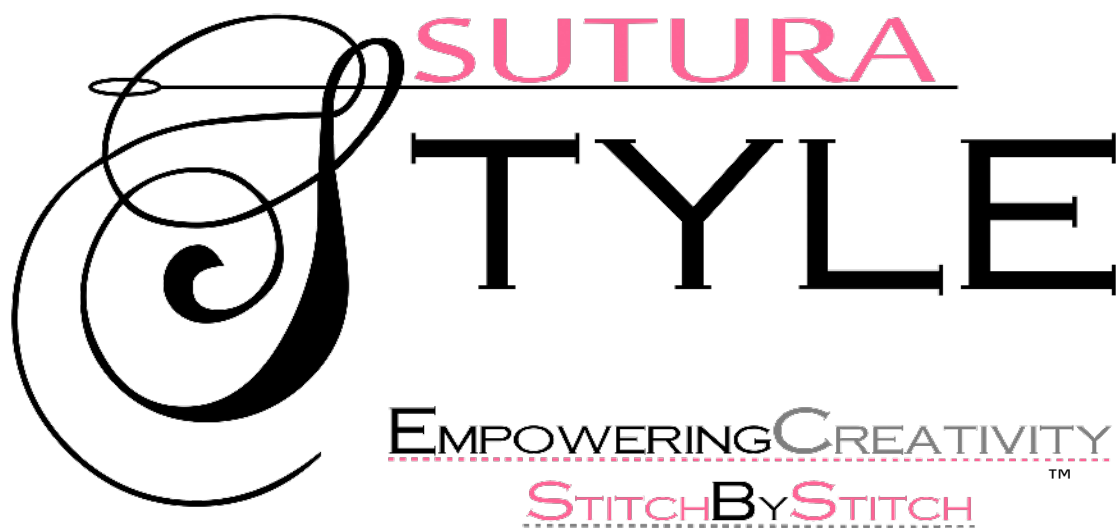


NATALIE MONKHOUSE

© 2019 Sutura Style and Sutura Fabrics. All rights reserved.
Also available from *The Sutura Style Series: The Sewist Tote, Bobbin' Along Pincushion*
and *Cookie Tin Sewing Kit*, and *The Sutura Organizer: Memphis Edition*.

No part of this book may be reproduced in any form, unless otherwise stated. The information in this book is presented in good faith, but no warranty is given, nor results guaranteed. The author disclaims all liability from any injury to anyone undertaking the activities described in this book as a result of improper safety precautions.

*Oh Sew
Neat!*



The Sutura Style Learn to Sew Series

Sweetheart Scissor Covers

L1002

One Size

Copyright © 2019 Sutura Style and Sutura Fabrics

7565 Macon Road, Memphis, TN, 38108

All rights reserved.

SWEETHEART SCISSOR COVERS

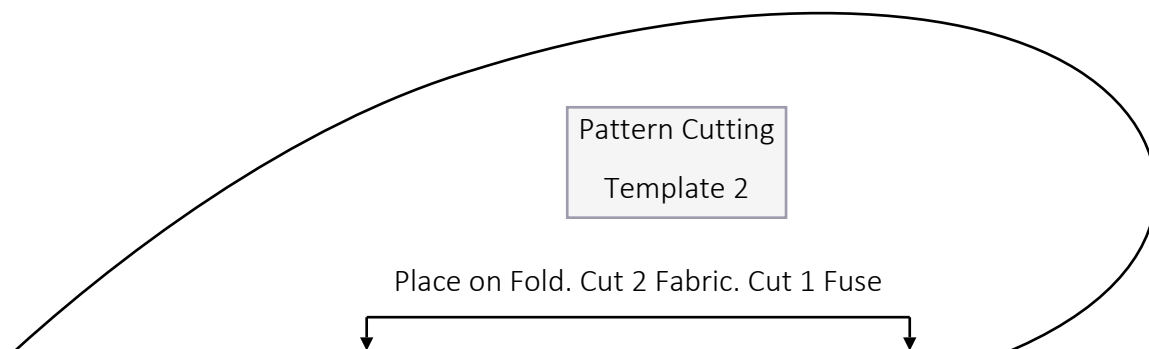
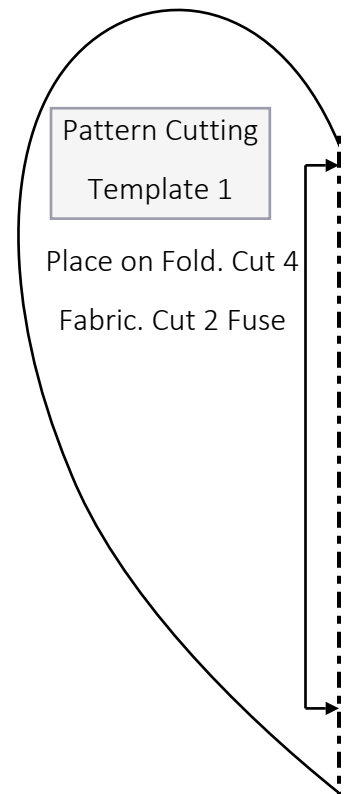
10.5 INCH TAILOR'S SHEARS, 8.5" DRESSMAKER SHEARS, AND THREAD SNIP COVERS

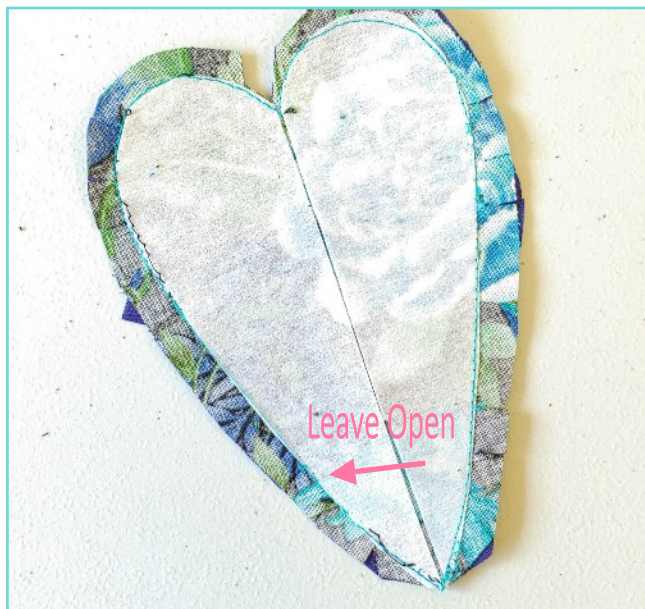
Cutting Instructions

1. Cut four squares of fabric about 4.5 inches for the scissors and snips
2. Cut two rectangles 6.5 inches by 4.5 inches
3. Cut two 4.5 inch squares of interfacing. Cut one 6.5 inch by 4.5-inch rectangle of interfacing.
4. Trace the Pattern Templates onto plain paper
5. Fold the fabric squares in half. Pin the Pattern Templates on the fold. Cut.
6. Repeat for the interfacing. Trim $\frac{3}{8}$ " from the edge.
7. When you open it, you will have a heart.

Sewing Instructions

8. Iron the interfacing to matching hearts, with the fuse at the center.
9. Sew 2 hearts, right sides together, leaving one long side open.
10. Press your seam.
11. Press seam allowances to one side, clipping as needed.
12. Turn inside out.
13. Tuck in the raw edges in and using a glue stick to secure. Press. Fold in Half. Press. Stitch the long sides leaving the rounded top open as shown.
14. Add a small loop of elastic at the top long enough to slip over the handles of your shears.





Fuse two interfacing hearts to two matching pieces of fabric. Place them right sides together on plain hearts. 1) Stitch .5 cm or 1/4" seam allowance around one heart leaving at least 3 cm or 1 3/8" open. 2) Sew 1/2" seam around the second heart. Trim seams to 1/4". Leave opening.



Turn the hearts inside out and tuck the raw edges inside the heart. Fold the hearts in half. Press. Stitch the long sides leaving the rounded top open as shown.

This set of three covers will offer protection for many years to come.



Repeat for the large heart. Clip the edges. Press. CAUTION: DO NOT use steam. It may cause burns. Use a chopstick to separate the seam allowances for pressing and to handle the hot fabric.



Add a small loop of elastic at the top long enough to slip over the handles of your shears.

