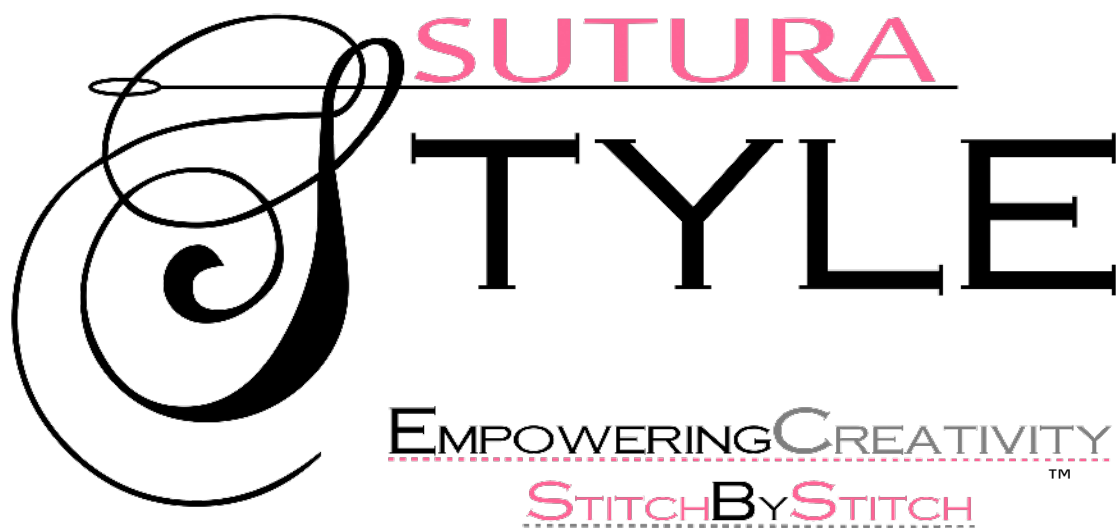




## A collection of sewing machine accessories arranged on a white background. The items include: a large metal presser foot assembly with a yellow adjustment knob; several smaller metal presser feet of different shapes and sizes; a small blue plastic foot; a large metal foot with a white plastic guard; a needle with a pink handle; a screwdriver with a pink handle; a seam ripper with a green handle; and a long, thin metal tool, possibly a bodypin or a long needle.

# A Guide to Sewing Machine Presser Feet

No part of this book may be reproduced in any form, unless otherwise stated. The information in this book is presented in good faith, but no warranty is given, nor results guaranteed. The author disclaims all liability from any injury to anyone undertaking the activities described in this book as a result of improper safety precautions.



# *The Sutura Style Learn to Sew Series*

## Fifty Feet Tall

A guide to understanding the most commonly used presser feet for your sewing machine

Copyright © 2019 Sutura Style and Sutura Fabrics  
7565 Macon Road, Memphis, TN, 38108  
All rights reserved.

# Meet The Feet

The world of sewing, quilting, and home decor is rich in creative outlets. There are so many types of sewing machines, accessories, and tools to choose from, it is hard to decide what to buy. This student handbook outlines the fifty most frequently used low-shank presser feet.



A presser foot is an interchangeable part of the sewing machine that holds the fabric as the feed dogs move the cloth forward. Each foot is comprised of these components:

- the shank, (low, high, slant)
- the toes,
- the ankle, and
- the guide (on select feet only).

Presser feet are different from sewing machine attachments. Secured to the machine bed, attachments are an optional part used to assist with folding and guiding the fabric. Feet are

essential to sewing and are fixed to the machine by the shank.

In addition to the items that came with your sewing machine, there are cost-effective sets of snap-on presser feet readily available online. It is recommended to purchase a forty-two piece set to expand your sewing repertoire. Some kits come with handy cases that keep the contents neatly organized. Clear, plastic boxes may be purchased from a dollar store if necessary.

The Deluxe Presser Foot Kit, pictured, has a handy reference guide. However, the language used in the guide is inaccurate. Students should use the guide

provided in this handbook instead. There are six groups used to categorize presser feet in this guide. These include utility, decorative, texture, finishing, closure, and advanced function.

## UTILITY PRESSER FEET

Most sewing projects are created using utility stitches. To complement these stitches there are seven presser feet. These basics save time and increase accuracy. This category includes:

- Universal Foot,
- Zigzag Foot,
- Non-stick Foot,
- Roller Foot,

- Straight Stitch Foot,
- 1/4 inch Straight Foot,
- 5/8 inch Metal Guide Foot,
- 5/8 inch Clear Guide Foot,
- Overcasting Foot,
- Curve Master 5/8-inch Foot,
- Curve Master 1/4-inch Foot,
- Blind Hem Foot, and
- Even Feed Foot.

Modern sewing machines come with several of these feet.

#### DECORATIVE STITCH PRESSER FEET

Creating beautiful stitches with a sewing machine is easy. Select the desired stitch from the control panel and attach the correct foot. Decorative Stitch Feet guide the fabric smoothly so stitches are neat and even. The following are for decorative stitching:

- Edge Stitch Foot,
- Large Decorative Stitch Foot,
- Small Decorative Stitch Foot,
- Clear Decorative Stitch Foot,
- Monogram Foot, and
- Stitch Guide Foot.

#### TEXTURE FEET

Adding surface designs to textiles creates an eye-catching style instantly. Simple topstitching, quilting, and visible seams are all ways to make a

project stand out. Heirloom stitches, smocking, and deconstructed style lines also stimulate visual interest. Within this broad category are:

- 1/4-inch Quilting Foot (with or without a guide),
- Stitch in the Ditch Foot,
- Edge Stitching Foot,
- Free-Motion Foot,
- Fringe Foot,
- Braid Foot,
- Double Cording Foot,
- 5-Cord Cording Foot,
- 7-Cord Cording Foot,
- 7-Groove Plain Pin Tuck Foot,
- 9-Groove Plain Pin Tuck Foot,
- Pin Tuck Foot with Blades,
- Pin Tuck Foot with Wide Guide,
- Piping Foot,
- Ribbon and Sequins Foot, and
- Pearls and Beads Foot.

#### FINISHING FEET

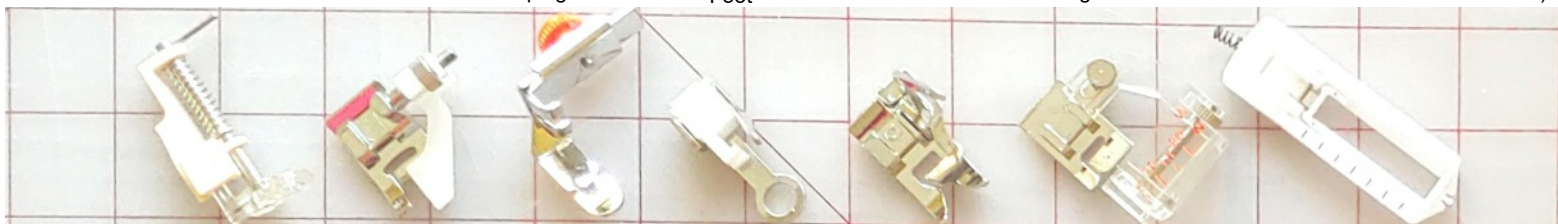
Finishing feet are used to give garments, quilts, and home decor projects a professional look. Create a flawless finale for collars, cuffs, hems, and edges with these presser feet.

- Blind Hem Foot
- Bias Tape Sewing Foot

1. Universal Foot
2. Zigzag Foot
3. Straight Stitch Foot
4. 1/4" Quilting Foot
5. 1/4" Quilting Foot w/Guide
6. Over-casting Foot
7. Edge Stitch Foot



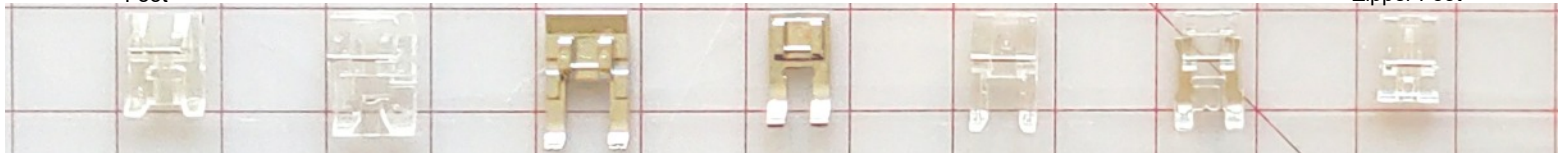
8. Free Motion Foot
9. Blind Hem Foot
10. Zipper and Piping Foot
11. Darning Foot
12. Knit Fabric Foot
13. Bias Tape Sewing Foot
14. Generic Buttonhole Foot (not for machines with auto-buttonhole)



15. Fringe Foot
16. Braid Foot
17. Double Cording Foot
18. Applique Foot
19. 7-Groove Pin Tuck Foot
20. 9-Groove Pin Tuck Foot
21. Small Zipper Foot



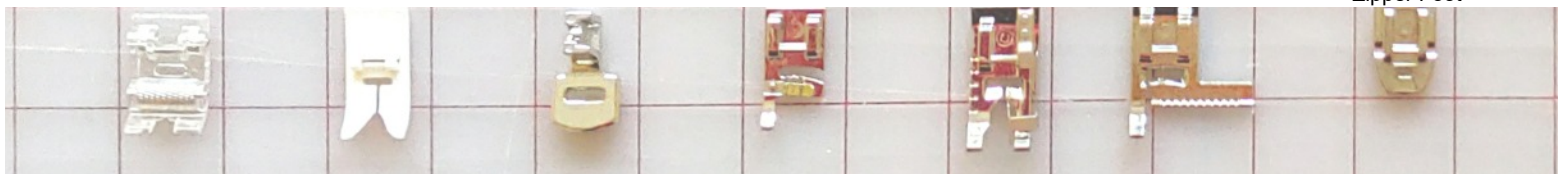
22. Ribbon & Sequins Foot
23. Pearl & Bead Foot
24. Large Decorative Stitch Foot
25. Small Decorative Stitch Foot
26. Clear Decorative Stitch Foot
27. Monogram Foot
28. Clear Invisible Zipper Foot



29. 5-hole Cording Foot
30. 7-hole Cording Foot
31. Wide Lace Edge Rolled Hem Foot
32. 6 mm Rolled Hem Foot
33. 3 mm Rolled Hem Foot
34. Narrow Lace Edge Rolled Hem Foot
35. Button Sewing Foot



36. Rolling Foot
37. Non-stick Foot
38. Shirring Foot
39. 3-hole Cording Foot
40. Edge Joining Foot
41. Stitch Guide Foot
42. Metal Invisible Zipper Foot



A large magnetic seam guide is an attachment used to direct fabric under the foot with an even seam allowance.



Some presser feet require an adaptor or a different style of shank. This plastic shank is used to attach small rolled hem feet to the machine. The hem foot (right) is held on the machine by a Specialty Foot Adaptor. Photo Courtesy of Goldstar Tool. [www.goldstartool.com/](http://www.goldstartool.com/)





- Wide Lace-Edge Rolled Hem Foot
- Narrow Lace-Edge Rolled Hem Foot
- 3 mm Rolled Hem Foot

6 mm Rolled Hem Foot

### CLOSURE FEET

Bring closure to every project with style. Using the correct foot will make all the difference when stitching zippers, buttons, and buttonholes. There are several options for each type of closure. These include:

- Large Zipper and Piping Foot,
- Generic Buttonhole Foot,
- Automatic Buttonhole Foot,
- Computerized Buttonhole Foot,
- Small Zipper Foot,

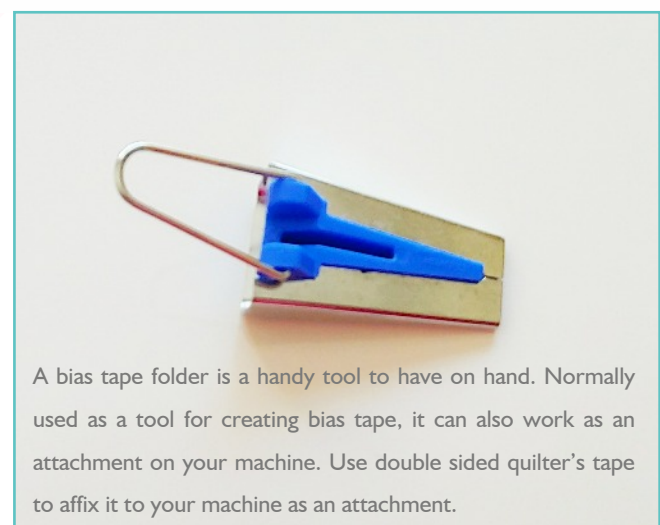
### ADVANCED FUNCTION FEET

Your sewing machine can do astonishing things. It can pleat fabric, create floral designs on the surface, and gather one layer of fabric into another, all with the right foot. Although these presser feet can be daunting in size and sound, with a little practice, they can be quite user-friendly. Due to the large size of Advanced Function Feet, they are sometimes mistakenly referred to as attachments. This "Big Gun" category features the following:

- Shirring Foot,
- Flower Stitching Foot,
- Ruffler Foot,

- 1/2-inch Collarette/Rolled Hem Foot,
- 3/4-inch Collarette/Rolled Hem Foot,
- One-inch Collarette/Rolled Hem Foot,
- 4 mm Felling Foot,
- 6 mm Felling Foot, and
- 8 mm Felling Foot.

With a wide selection of presser feet and attachments on hand, sewists can achieve unique, professional results with an entry-level machine.



## The Big Guns

An Even Feed Foot is essential to sewing and quilting accurately while other bigger presser feet can wait until you are ready to splurge. Some of these require the Specialty Foot Adapter.

